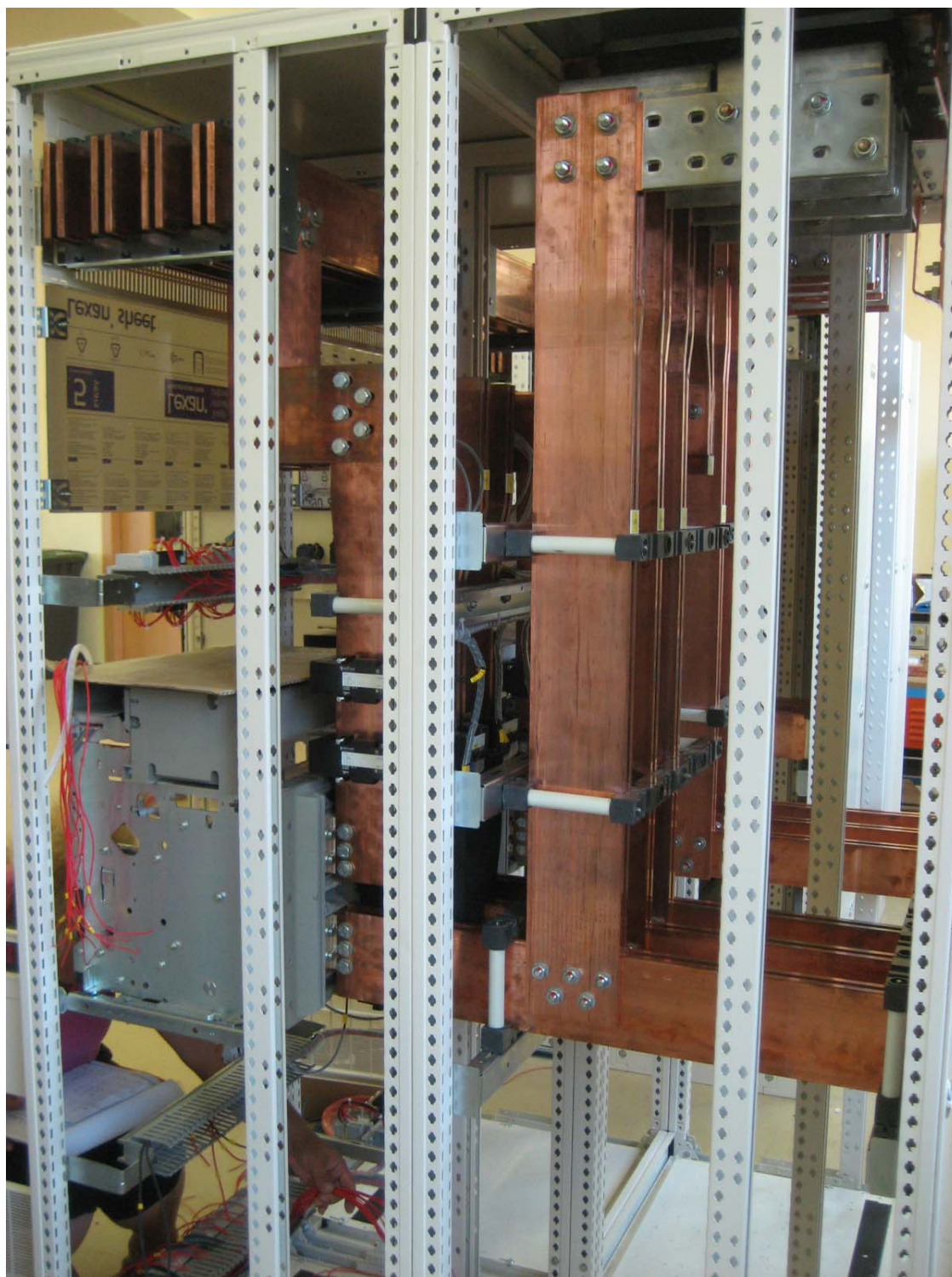


***LV Main distribution boards in SERDIKA Center - Sofia***



General view of LV switchgear - Schneider Electric Prisma P4000 type-tested enclosure



3200A Incomer with top and rear busbar system in LV switchgear

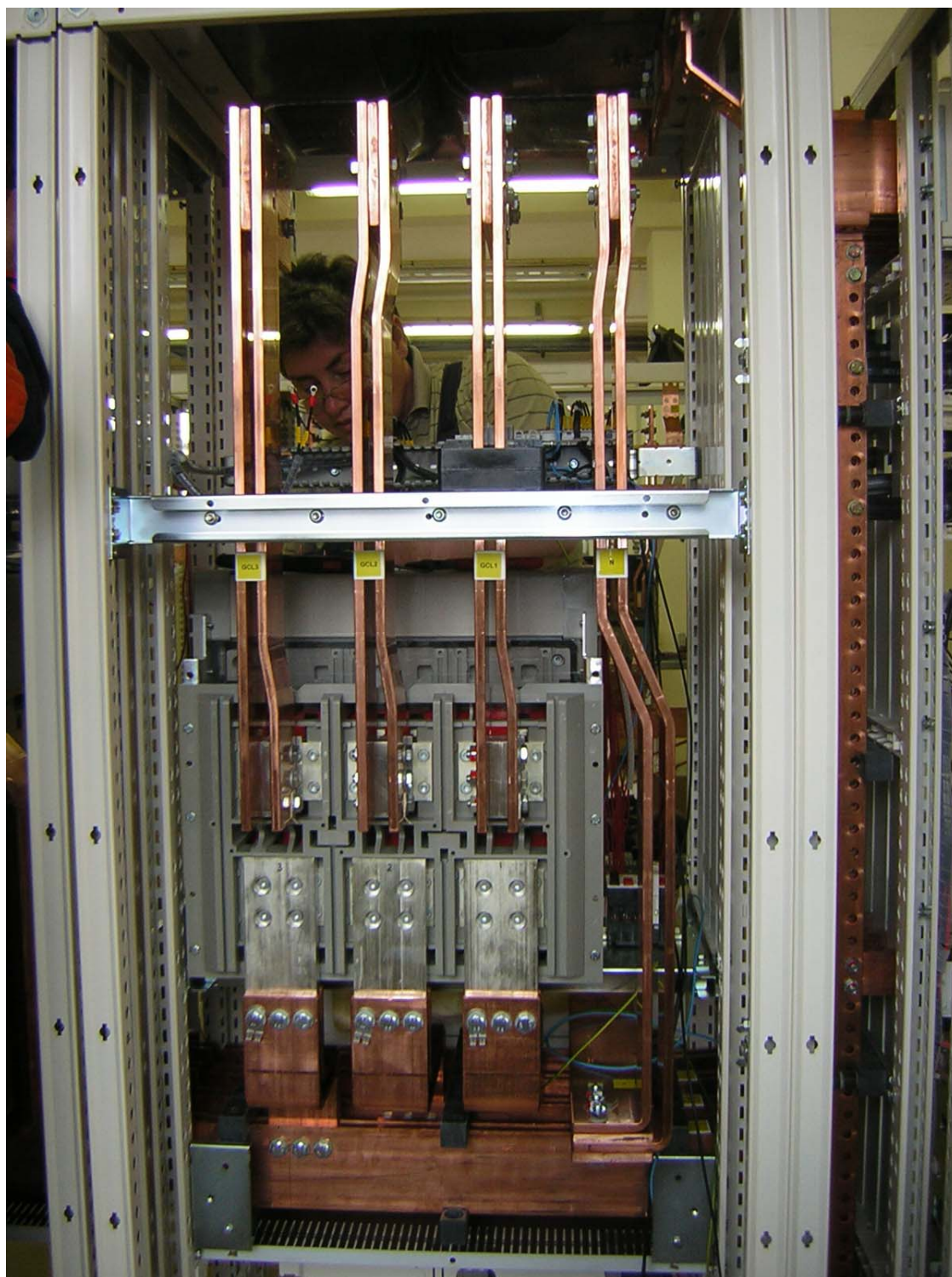


Outgoing MCCB in LV switchgear





Outgoing MCCB and ACB in LV MDB



ACB type Masterpact NW32 in LV switchgear



***LV Main distribution boards in Mall Bulgaria – Sofia***



Front view of Main distribution board MDB1.



Automatic transfer switch for the Diesel section in MDB1.



Incoming circuit breakers Masterpact NW in PRISMA P+ cubicles.



***LV Main switchgear MDB and MCC 0,4 kV form 4  
in substation 032 Lukoil Neftochim Burgas***



Front view of MDB with MCC 0,4 kV in substation 032



Column with draw-out units and cable-duct – MDB and MCC 0,4 kV in substation 032



Incomer Masterpact NT16H1 1600A





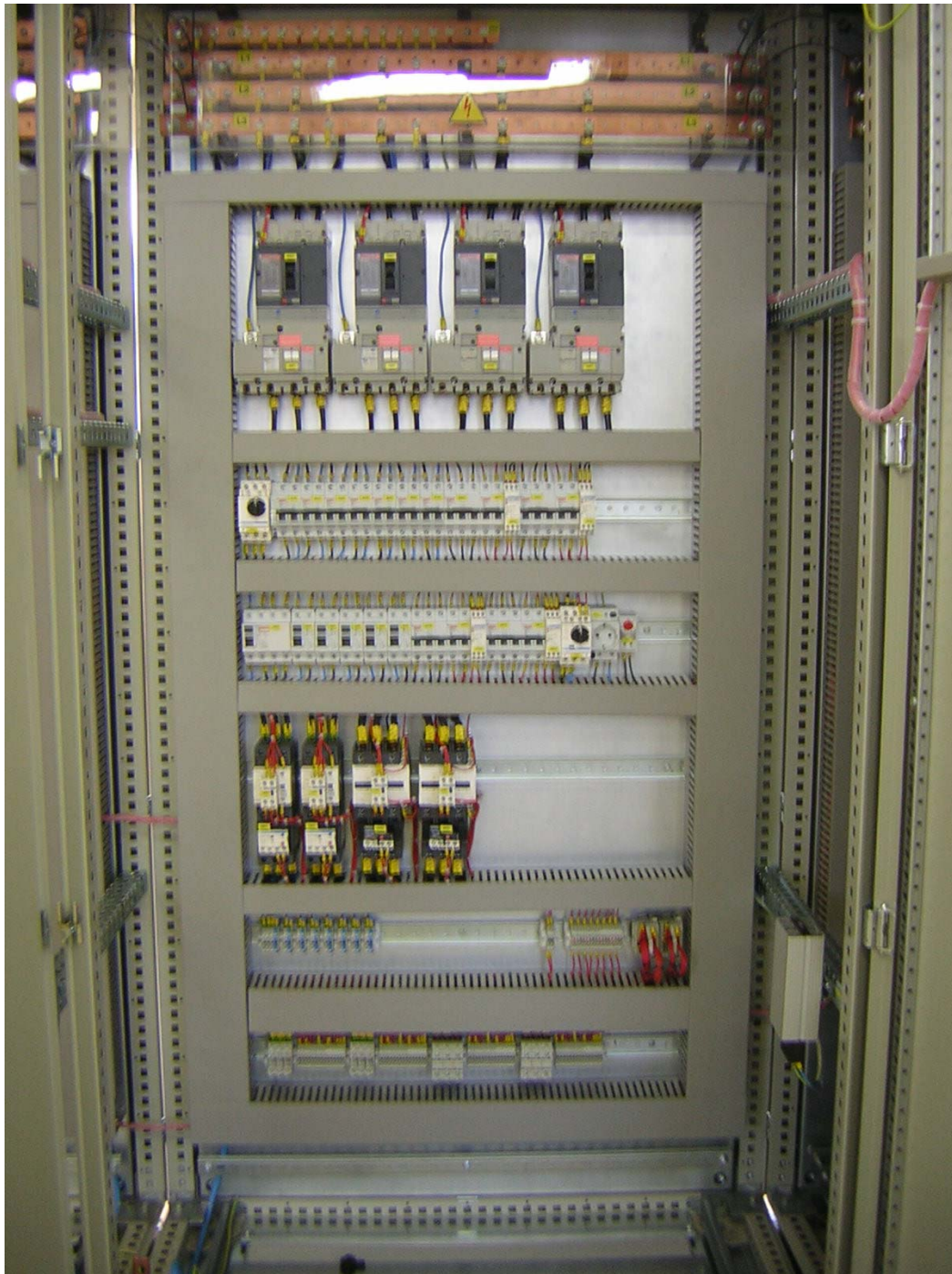
Outgoing feeders with fixed units in form 4b.

***LV Main switchgear for bio-diesel refinery INSAOIL – Rakovski town***



Front view of MCC for the INSAOIL factory

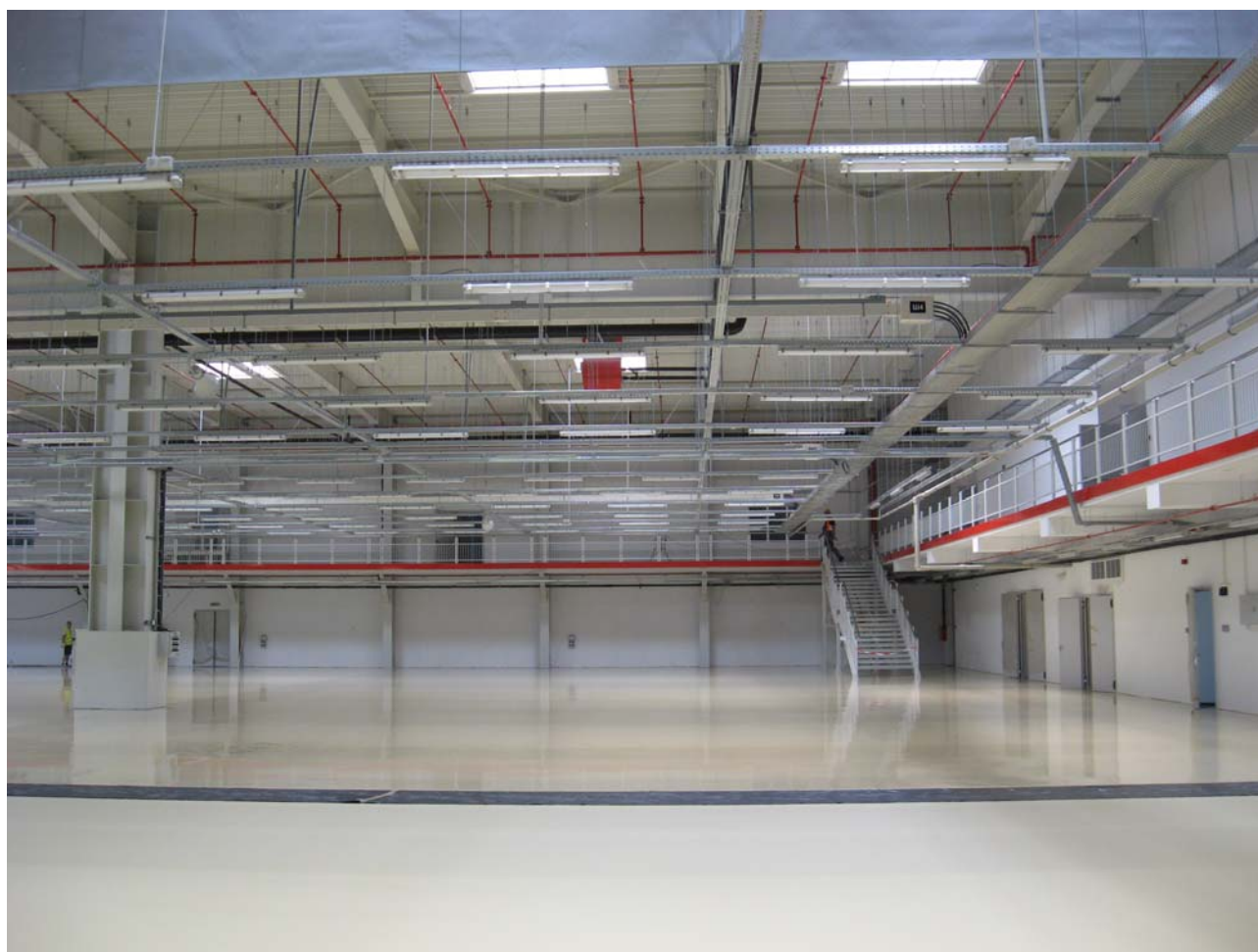




Typical arrangement of MCC cabinet.



***WITTE FACTORY in town of Rouse***



General view of the Lighting and electrical installations at  
WITTE factory in the town of Rouse.



Typical arrangement of industrial distribution switchboard  
WITTE factory in the town of Rousse.



Outside view of the WITTE factory in the town of Rousse.





The production area in Teleconb-Co. Ltd.

## ***MV Switchgear in Electrical substation SS1***



The substation SS1 with SM6 units,  
mounted on base in the room with false-floor.



Feeders with DM-1A modular units.





Transformer substation at MALL of Sofia.